

# Natural Ring

The shape and design of this ring looks natural and hand made. Make the ring 2.5 sizes larger than desired. The goal is to make a ring with raised edges.



## MATERIALS

Art Clay Silver 650/1200 Low Fire Slow Dry Type (10 gm)

Non-stick Teflon Surface Ring Strip

## ADDITIONAL TOOLS & SUPPLIES REQUIRED

- Non-stick surface, small paintbrush, stainless steel brush (short bristle), small files, 600, 1200 and 2000 grit sandpaper, agate burnisher, rubber block.
- Wooden ring mandrel
- Adjustable ring sizer
- Pencil
- Small piece of tape
- Firing equipment.

**Drying Methods** – may include hairdryer, oven, or toaster oven set below 250°F, food dehydrator, warming tray. Piece also may be left to dry naturally.

**Firing Methods** – include either by electric kiln, hand-held butane torch, or gas stovetop burner.

---

## GENERAL RING SIZING

Art Clay shrinks 8-10% during firing. The shrinkage rate depends on the shape and volume of the ring. Prepare the foundation for the ring 1.5 – 2.5 American sizes larger. This will allow for the shrinkage of the clay during firing.

Begin by determining your ring size:

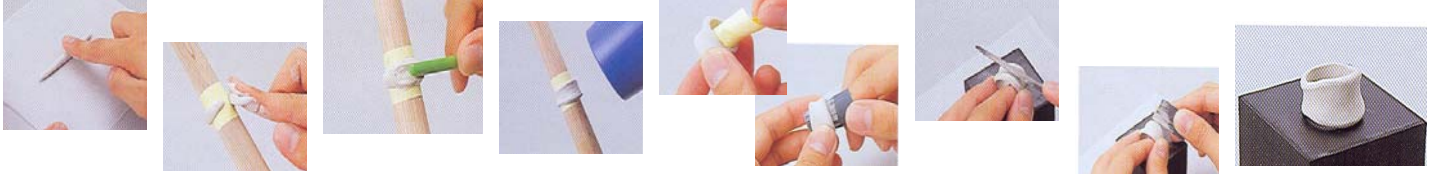
1. Using the adjustable ring sizer, measure your finger to a comfortable fit.
2. Put the ring sizer on the wooden mandrel and mark with the pencil where the mandrel fits snugly.



When the band is flat (1.5mm) & 10mm wide, make the ring 2 sizes larger than desired.

3. Wrap the non-stick strip around the pencil mark on the mandrel and cut so that the end just overlaps the beginning. Secure the strip with a small piece of tape. Tape only the Teflon sheet to itself, not to the mandrel. You will build your ring over the center of the marks that you can see through the non-stick strip.

## PROCESS



- ✚ Roll out clay type on non-stick surface, making a rope. Moisten as necessary.
- ✚ Lightly moisten the surface of the clay rope. Place it around the non-stick surface taped to the mandrel.
- ✚ Overlap the two ends of the clay and cut through both at once to form two blunt ends. Remove the cut off segments and wrap up to prevent drying. Join the blunt ends with paste and blend smooth. (Paste is made by taking a small amount of clay and adding a few drops of water to form a thickened paste, or use syringe-type or paste-type.)
- ✚ While the clay is still soft, make an impression in the center of the ring with the handle of the medium file or other smooth object.
- ✚ Wait 5 minutes for softer clay, paste, or syringe (if used) to begin to dry/set. Turn ring so that seam faces downward, and gently slide Teflon strip toward tapered end. This ensures the seam does not pull apart as clay shrinks minimally during drying.
- ✚ Dry the entire piece completely for 10-20 minutes with a hot air dryer or dehydrator, or dry at room air for more than 24 hours.
- ✚ Take the ring and the Teflon strip off of the wooden mandrel. Remove the sheet slowly.
- ✚ Smooth the inside of the ring with 600 grit sandpaper. Be careful not to sand too much, as the size of the ring will change.
- ✚ Shape the outside of the ring with the medium fine file on the rubber block.
- ✚ Very gently sand the surface with 600 and then 1200 grit sandpaper.
- ✚ This completes the forming process.
- ✚ Fire
- ✚ Place piece on rubber block. Brush entire piece with stainless steel brush. Piece will now be in matte finish.
- ✚ Firmly burnish with agate burnisher to bring up shine. (Alternate method is to use a rotary tumbler with mixed shape stainless steel shot.)